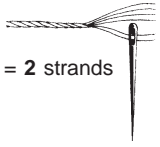




1 □ = 1 □ in the fabric  
Count the design from centre of fabric

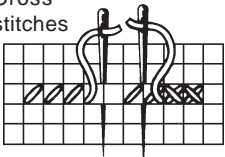
For this design please use  
Permin aida fabric. Item no.  
357 in colour 22 (357/22)

Work with split yarn = 2 strands

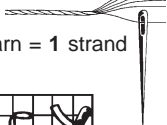


-  742. YELLOW
-  3854. ORANGE
-  3608. LIGHT RED
-  553. LILAC
-  155. BLUEISH LILAC
-  792. DARK BLUEISH LILAC
-  703. LIGHT GREEN
-  701. GREEN
-  3818. DARK GREEN
-  310. BLACK
-  738. LIGHT BEIGE
-  3045. GOLDEN

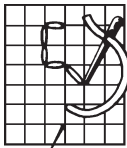
Cross stitches




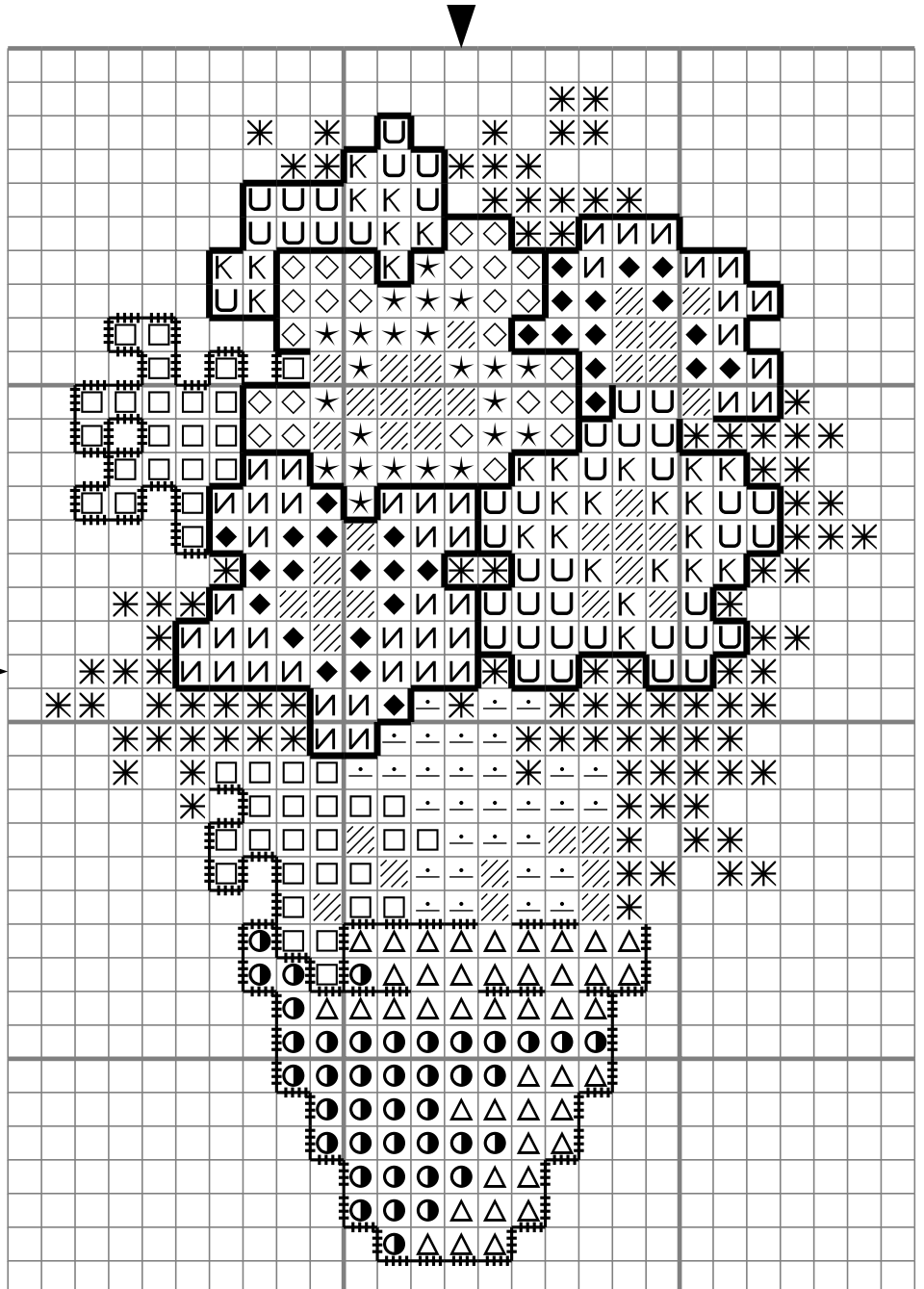
Work with split yarn = 1 strand



Back stitches



-  3818.
-  310.



**DMC**  
117



Made in Denmark©